



CRIMECAST[®] citywide maps

Detailed Crime Risk on a Citywide Level

CRIMECAST Citywide Maps display the crime risk within large geographic areas. The map window can span an area of up to 36 miles wide to allow for a more extensive analysis of potential crime risk within an entire city or locale. Citywide Maps are available in either Tract/Ward format or Contour format (see reverse side for details) and can be provided as a PDF or a printed 3' x 4' hard copy map.

Uses

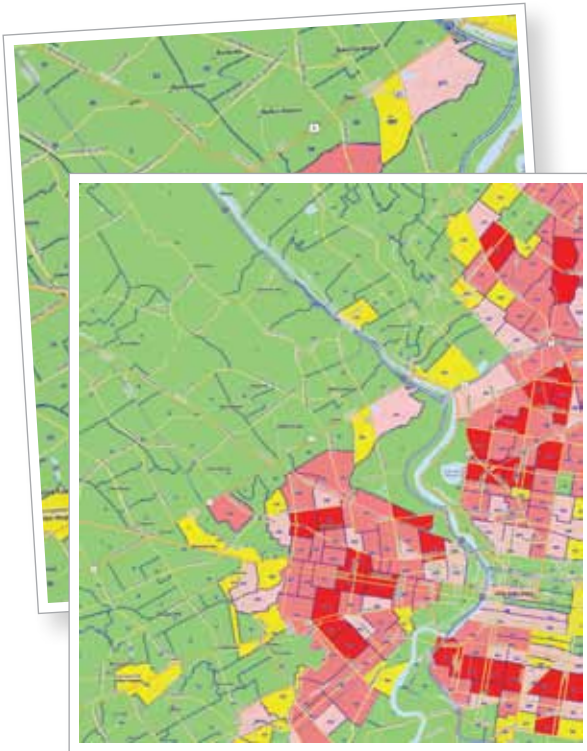
- Site selection
- Route planning
- Delivery services
- Real estate planning
- Executive protection
- Home health care services
- General proximity applications

Benefits

- Cost-effective results
- Online delivery of PDF in minutes
- Customized selection of map boundaries
- Available in the U.S., U.K. and Canada
- Ability to view risk levels for an entire city



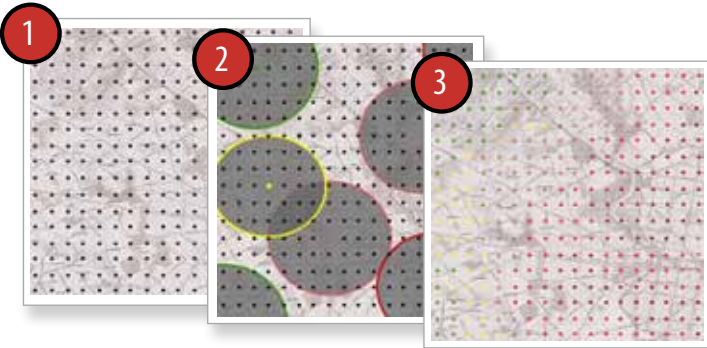
Tract/Ward Citywide Maps



These maps help to identify the potential source of crime risk within the selected map window. Risk scores are displayed on the map and represent the social disorganization of the inhabitants of each tract/ward, not those residents living in the surrounding areas.

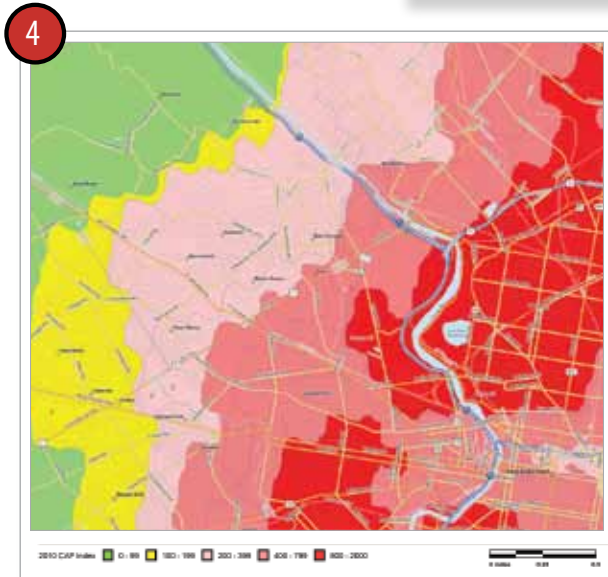
Tract/Ward Citywide Maps appear similar to the maps on CRIMECAST® Reports; however, they do not utilize the radius threshold analysis which takes into account the potential risk in surrounding neighborhoods. Therefore, criminal traveling patterns should be considered when viewing these maps.

Tract/Ward Citywide Maps are ideal for identifying the origin of crime risk. Each individual tract/ward is assigned a numeric risk score and a coinciding risk shading to represent its level of social disorganization.



Contour Citywide Maps (U.S. sites only)

These maps, which take into account criminal traveling patterns, are created using the same radius threshold analysis that is used within site-specific CRIMECAST® Reports.



During the creation process, points are plotted at every half mile within the map window (1). Each point is scored and color-coded based on the potential crime risk within a certain radius or population threshold (2). Finally, those color-coded points (3) are fused together to create shaded contours (4).

These maps are ideal for determining the overall crime risk. A point's risk level can be identified visually by using the color-coded CAP Index Score ranges.

*All Citywide Map purchases include a PDF version of the 3' x 4' map as well as a PDF map booklet. Please contact CAP Index for map customizations.