

CAP INDEX CORRELATION REPORT

VALIDATING THE 2022 CAP INDEX SCORING SYSTEM

ILLUSTRATING THE PREDICTIVE POWER OF CAP SCORES

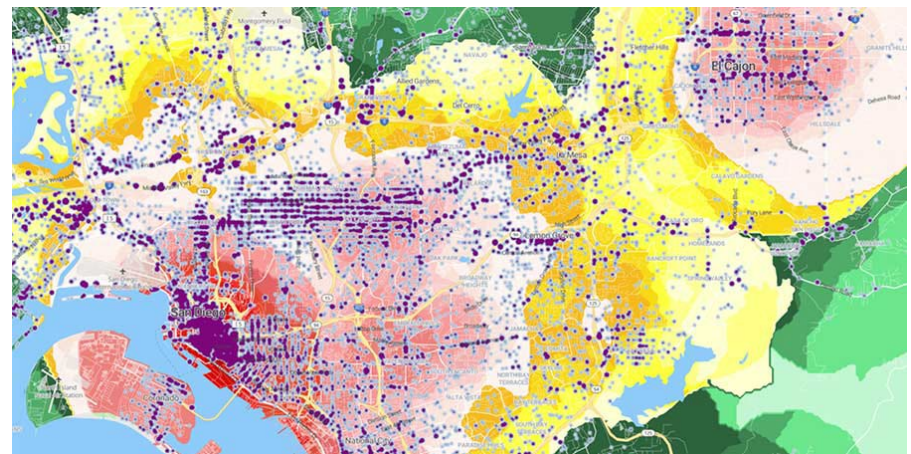
ABOUT THIS ANALYSIS



We analyzed nearly 5 million address-specific crimes that occurred in 2022. The crimes were reported by 1,000+ police departments covering more than 40% of the United States population and **were not used to build our 2022 database** as they had not yet occurred.

The goal of our analysis was to assess the ability of CAP Scores to predict actual subsequent crime occurrences throughout the United States. The charts below show the breakdown of each crime type by CAP Index Risk Category.

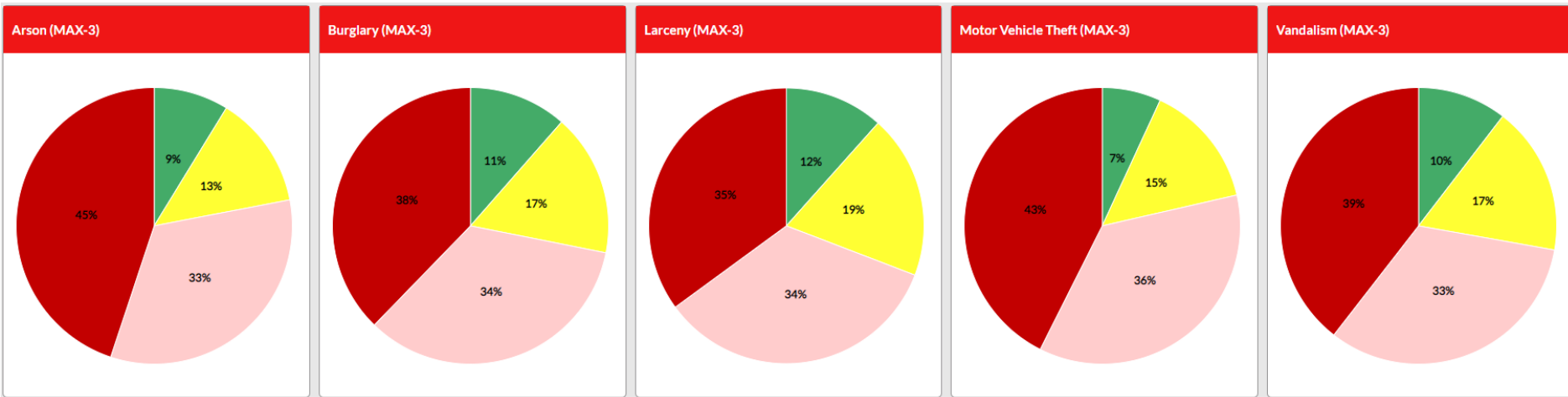
The strong correlations that can be seen in the following charts validate the high accuracy of the CAP Index Scoring System.



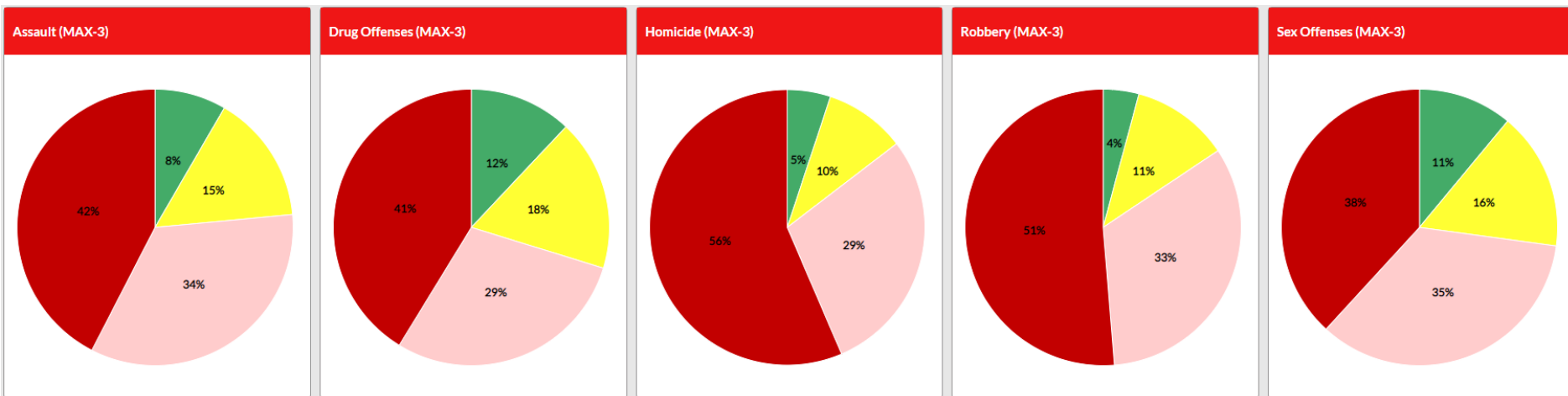
Illustrating the correlation between 2022 police incident data and CAP Index Risk Categories



CRIMES AGAINST PERSONS (MAX-3)



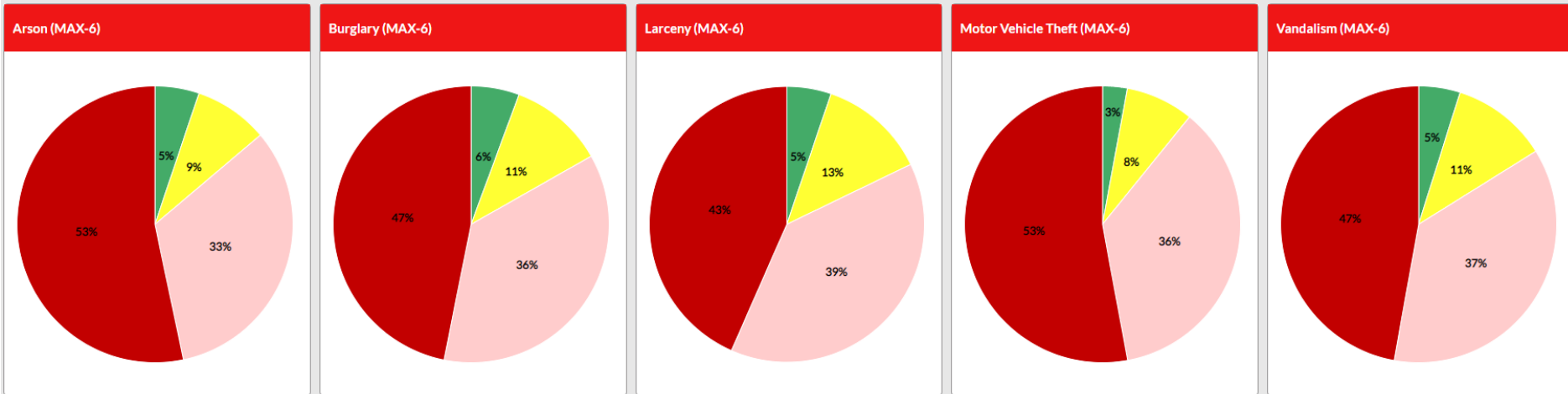
CRIMES AGAINST PROPERTY (MAX-3)



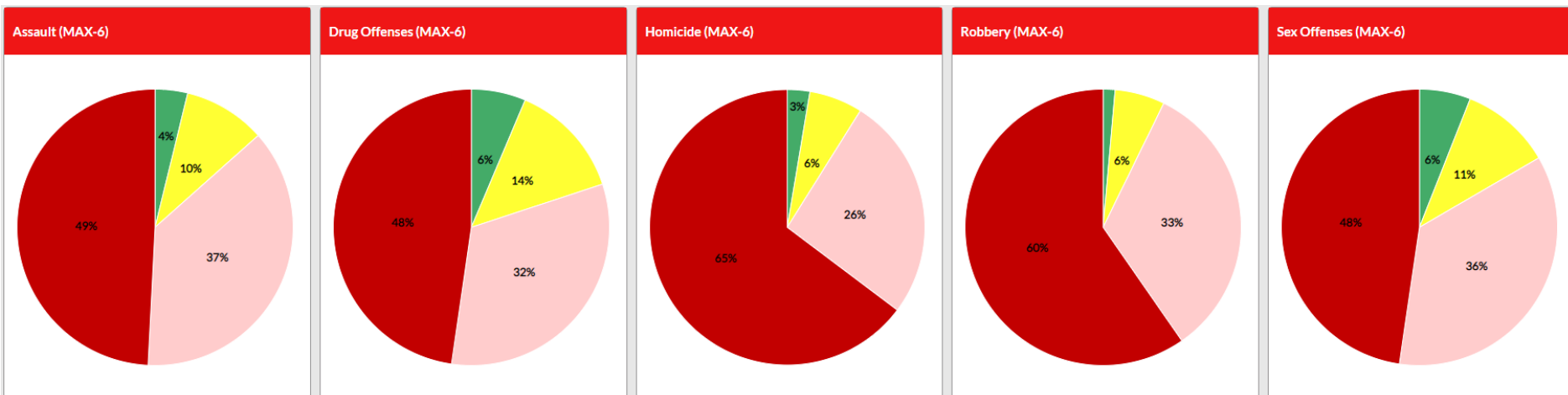
Illustrating the correlation between 2022 police incident data and CAP Index Risk Categories



CRIMES AGAINST PERSONS (MAX-6)



CRIMES AGAINST PROPERTY (MAX-6)



For additional questions, please contact:



Office: 610.903.3000

Email: askcap@capindex.com

DISCLAIMER: CAP Index, Inc. ("CAP") has used reasonable efforts to include accurate and complete information in this document. CAP makes no representations or warranties that the information provided through this document is accurate, complete or current. CAP may make changes to the information in this document, at any time, without notice and make no commitment to update this information. The contents of this document are the property of CAP. You may print and download portions of material from the different areas of the document solely for your own non-commercial use. Any other copying, redistribution, retransmission or publication of any document material is strictly prohibited without the express written consent of CAP. By accepting this document, you agree not to change or delete any information included in the document. In no event shall CAP be liable for any special, indirect, or consequential damages or any damages whatsoever resulting from loss of use, data, or profits, whether in an action of contract, negligence, or other action, arising out of or in connection with the use or performance of documents, services, or information available from this document. The findings presented in this document are intended to provide a basis of understanding for the reader on the issues presented. The information is not to be construed or used as a substitute for specific legal advice and may not reflect an analysis of all relevant variables or the operational feasibility of the considerations presented. Individuals seeking legal advice for a particular problem or issue should obtain advice from an attorney of their choosing.